

# **FISA-EURADWASTE SNETP Forum**

## **NEA Activities**

**Soufiane MEKKI**

*Division of Radioactive Waste Management  
and Decommissioning*

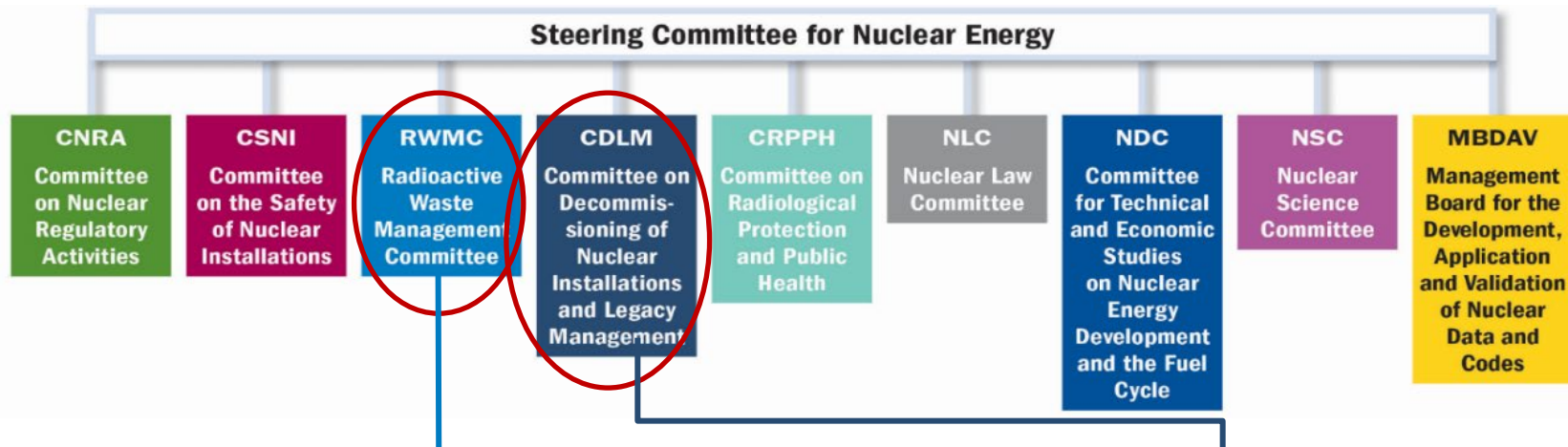


# NEA member countries



**The NEA's current membership consists of 34 countries in Europe, North America and the Asia-Pacific region. Together they account for approximately 82% of the world's installed nuclear capacity.**

# NEA's Framework for Managing the Back-end



**RWMC:** Developing strategic policies, identify good practices in managing radioactive wastes in all phases.

- **Regulatory aspects**
- **Legal issues**
- **Environmental factors**

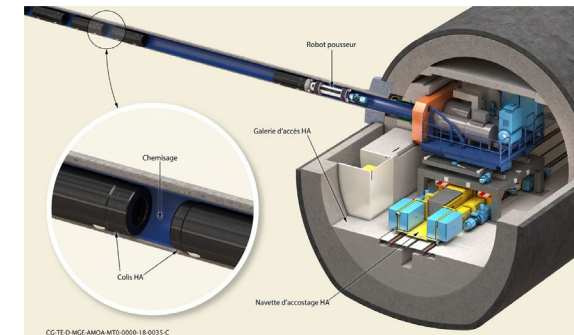
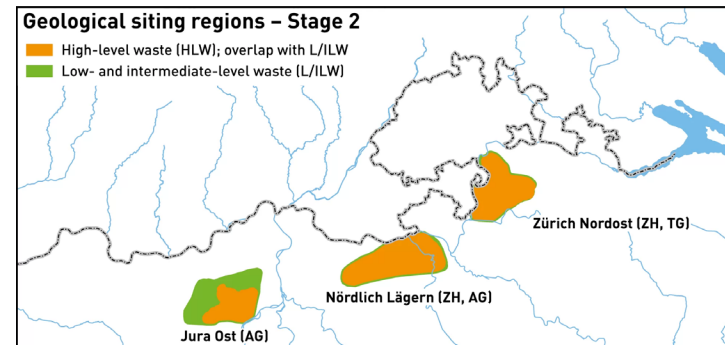
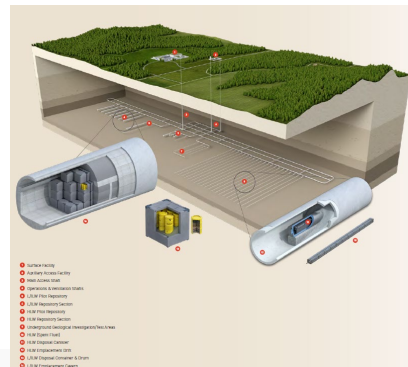
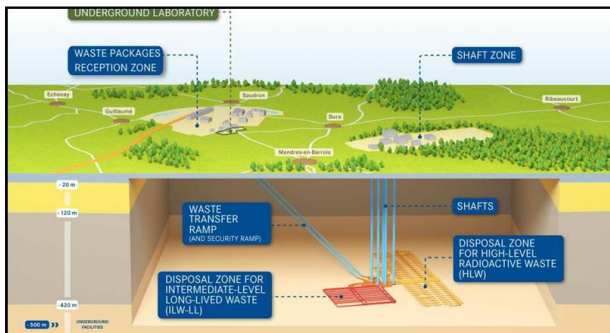
**CDLM:** Developing strategic policies, identify good practices in nuclear decommissioning and management of legacy facilities

- **Operational Safety**
- **Societal factors**
- **Economic factors**

# Radioactive Waste Management Committee(RWMC)

It is supported by two forums, two working parties and ten expert groups, addressing:

- **Integration Safety Case for DGRs (IGSC)** (safety assessment methodologies, constructing multiple lines of evidence, organisational and strategic issues, regulatory requirements)
- **Understanding Rock formations for DGRs (Salt/clay/Crystalline Clubs)**
- **Consideration of Operational Safety for DGRs (EGOS)** (identify, evaluate, capture Int'l good practice in safe operation of DGRs)
- **Regulatory- Implementer dialogue with focus to DGR licensing (RIDD)** (dialogue to enhance societal trust, treat uncertainty & risk communication/management)
- **Information, Data and Knowledge Management (IDKM and 4 Expert Groups)** (including digital safety case, archiving and awareness presentation)
- **Robotics and Remote Systems (EGRRS)** (application of innovative technologies, barriers, and potential solutions)
- **Regulatory Challenges (RF)** (strategies, public communication, ensuring funding, etc.)
- **Social Engagement (FSC)** (stakeholder dialogue, confidence & trust building, etc.)





# Committee on the Decommissioning of Nuclear Installations and Legacy Management (CDLM)

It is supported by two forums, two working parties and two expert groups, addressing:

- **Regulatory Challenges (RF)** (*strategies, public communication, ensuring funding, etc.*)
  - **Social Engagement (FSC)** (*stakeholder dialogue, confidence & trust building, etc.*)
  - **Management and Organisational Aspects (WPMO)** (*programme & project management, supply chain considerations, commercial aspects*)
  - **Technical, Environmental and Safety Aspects (WPTES)** (*Risk impacts, Characterization, Decontamination and Decommissioning Technologies and Innovative Techniques*)
  - **Costing (EGCDL)** (*international costing structure for decommissioning and legacy management, benchmarking*)
  - **Decision-Making Process Development (HDCS)** (*strategies for identifying complex sites, criteria for decision making process*)
- In cooperation with Radioactive Waste Management Committee:
- **Information, Data and Knowledge Management (IDKM)**
  - **Robotics and Remote Systems (EGRRS)**

See Structure under: [www.oecd-nea.org/rwm/cdlm/](http://www.oecd-nea.org/rwm/cdlm/)





**Thank you for  
your attention**